

# AVAILABLE FOR SUBLEASE

±9,263 SF INDUSTRIAL BUILDING



# 13240 BARTON CIR

SANTA FE SPRINGS | CALIFORNIA

## PROPERTY FEATURES:

- 1.09/1,000 SF PARKING RATIO
- FUNCTIONAL WAREHOUSE
- RARE DOCK HIGH DOOR FOR BUILDING SIZE
- 21' BUILDING HEIGHT
- WAREHOUSE: 8,263 SF
- OFFICE: 1,000 SF

### *For More Information, Contact:*

**JUSTIN SMITH**

Senior Vice President

License ID# 01504494

949.790.3151

[jbsmith@lee-associates.com](mailto:jbsmith@lee-associates.com)

**GRANT LABOUNTY**

Associate

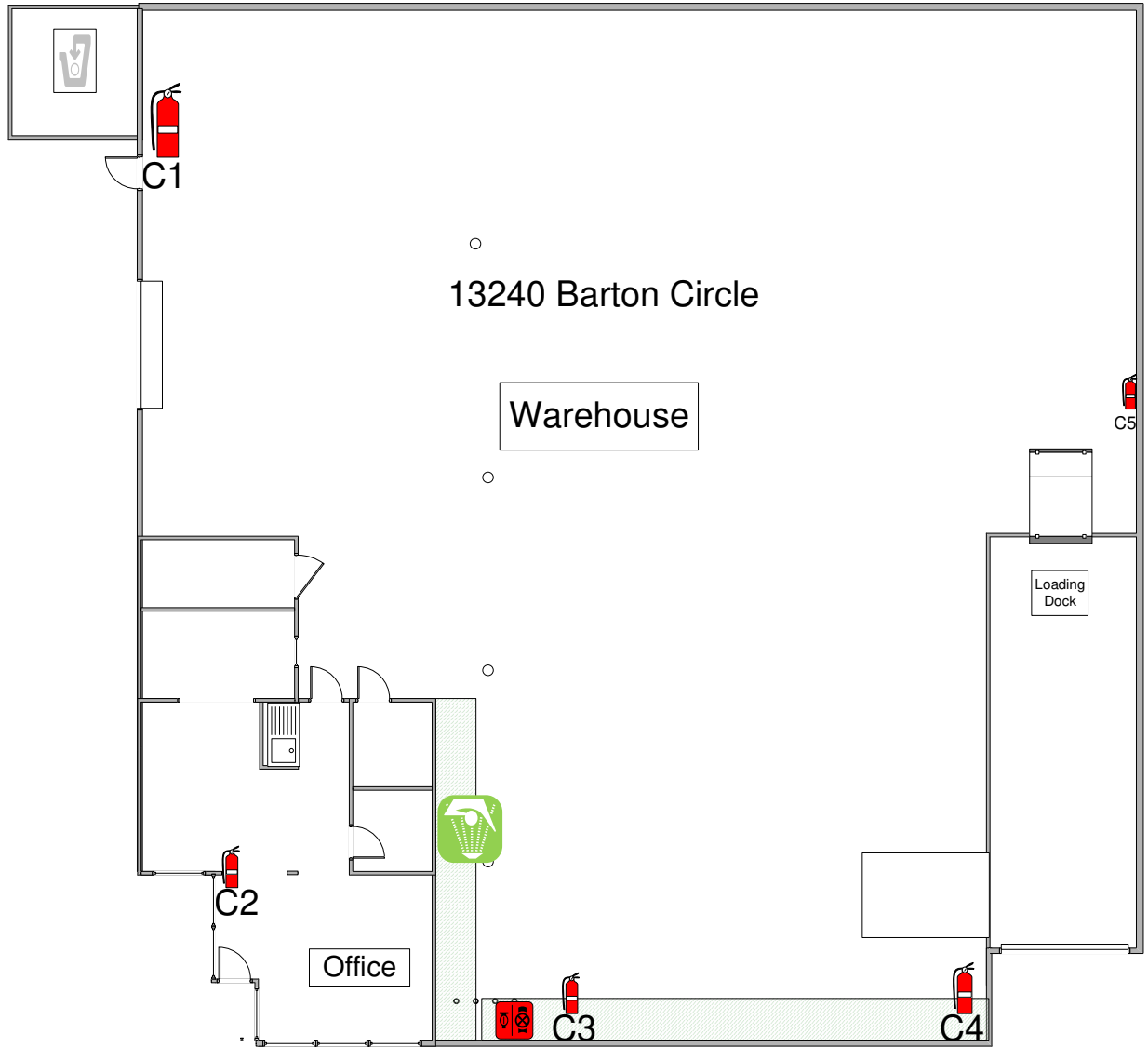
License ID# 02086573

949.790.3120

[glabounty@leeirvine.com](mailto:glabounty@leeirvine.com)

# AVAILABLE FOR SUBLEASE

±9,263 SF INDUSTRIAL BUILDING



**For More Information, Contact:**

**JUSTIN SMITH**  
Senior Vice President  
License ID# 01504494  
949.790.3151  
jbsmith@lee-associates.com

**GRANT LABOUNTY**  
Associate  
License ID# 02086573  
949.790.3120  
glabounty@leeirvine.com

